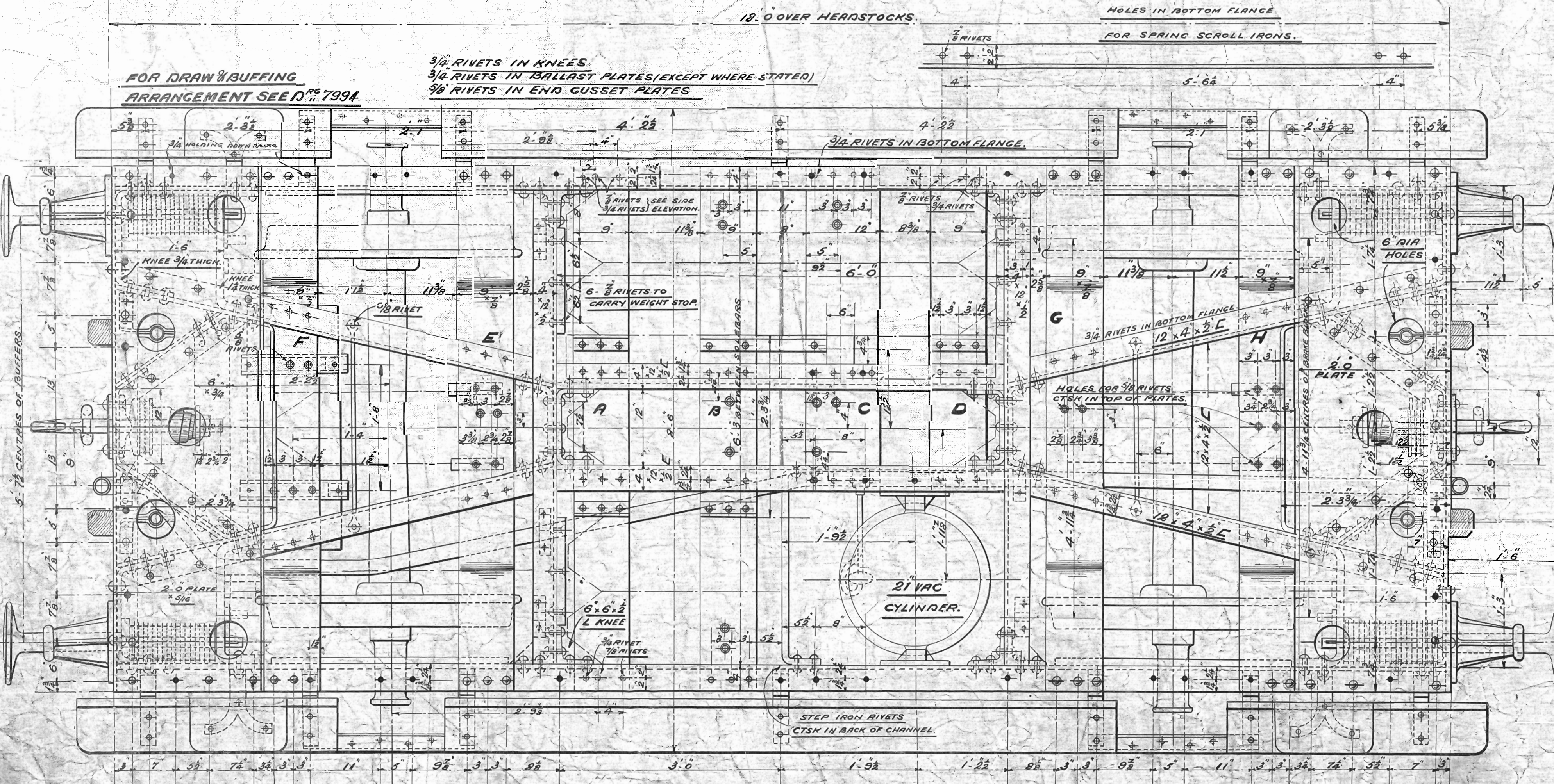


LONGITUDINAL SECTION.

NOTE: ALL BRAKE WHEELS TO WORK CLOCKWISE WHEN BRAKE IS APPLIED. NEW BRAKE WHEELS TO BE PROVIDED TO SUIT. BRAKE COLUMNS & NUTS TO BE EXCHANGED WITH THOSE AT PRESENT FITTED ON 10 TONS GOODS BRAKE VANS. 18.5.23

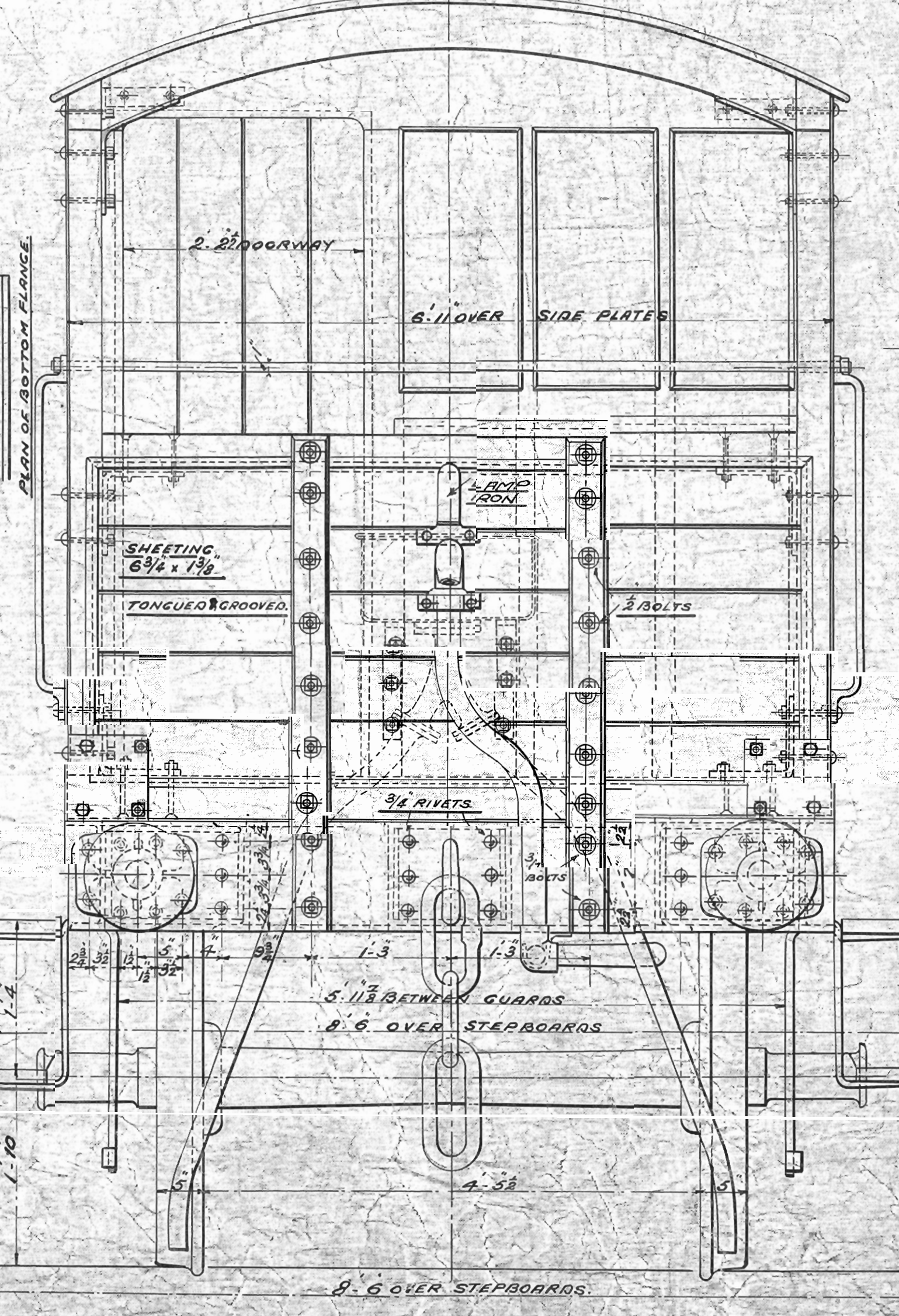
CROSS SECTION ON LINE C.D. CROSS SECTION ON LINE A.B.

To be fitted with:-
 DRIVER'S TROUSERS TO D.P. NO. 6156
 SCREW COUPLING TO " 8066
 BUFFER CASE (F.P.L.M. PART 3660) D.P. NO. 8990
 BUFFERS TO BE LENGTHENED TO 14" & PROTECTION
 BUFFERS TO BE LENGTHENED TO 14" & PROTECTION
 18.7.23

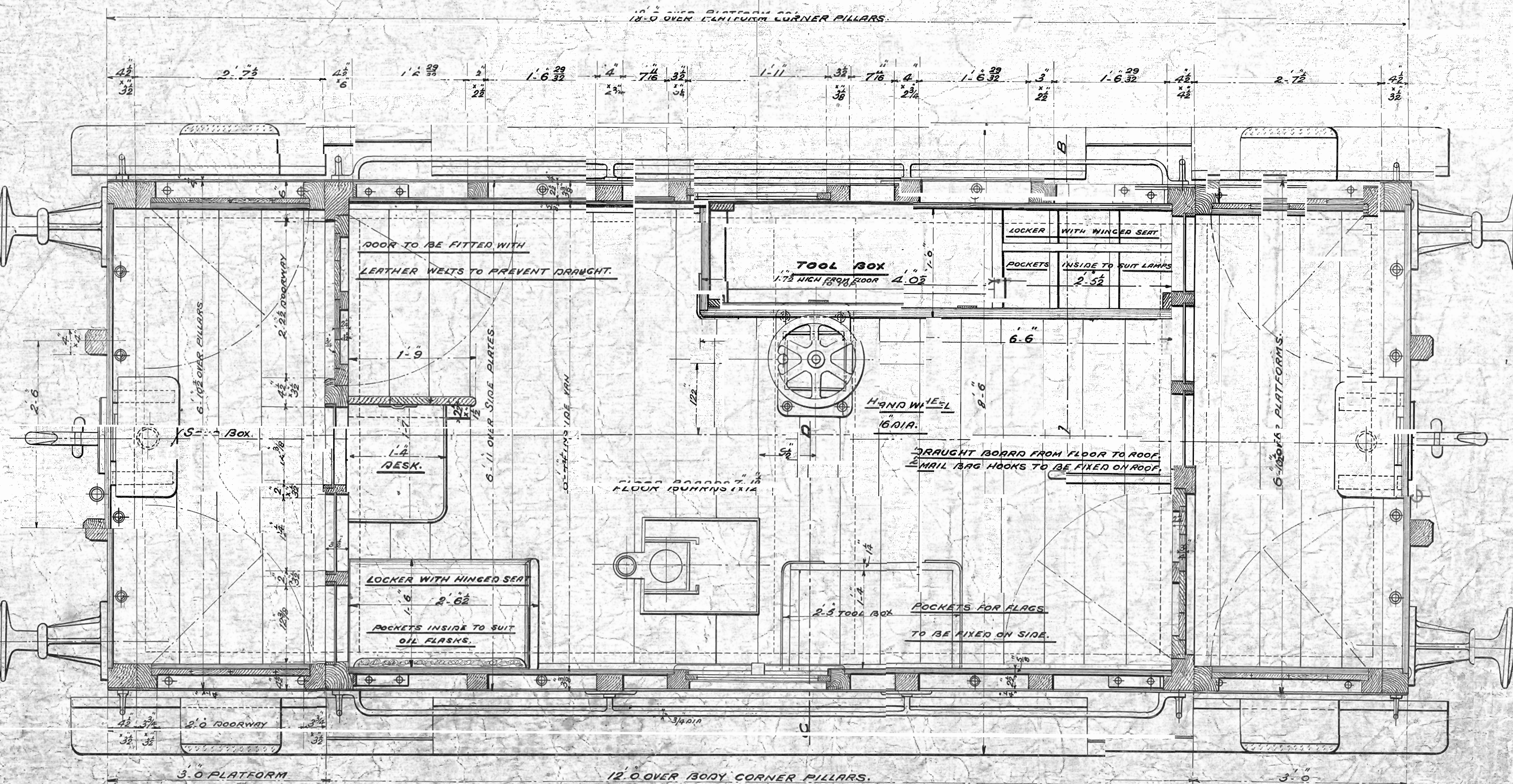


PLAN OF UNDERFRAME.

FRAME CONSTRUCTED OF STEEL CHANNELS 12" x 4"
 NOTE: FOR BALLAST PLATES AND 10 SEE D.P. NO. 6292
 10 10 B.C.E.F.G.H. 10 3628



END ELEVATION.



SECTIONAL PLAN OF BODY.

20 TONS GOODS BRAKE VAN

SCALE 7/8 INCH TO ONE FOOT

DRAWING No. 8315

