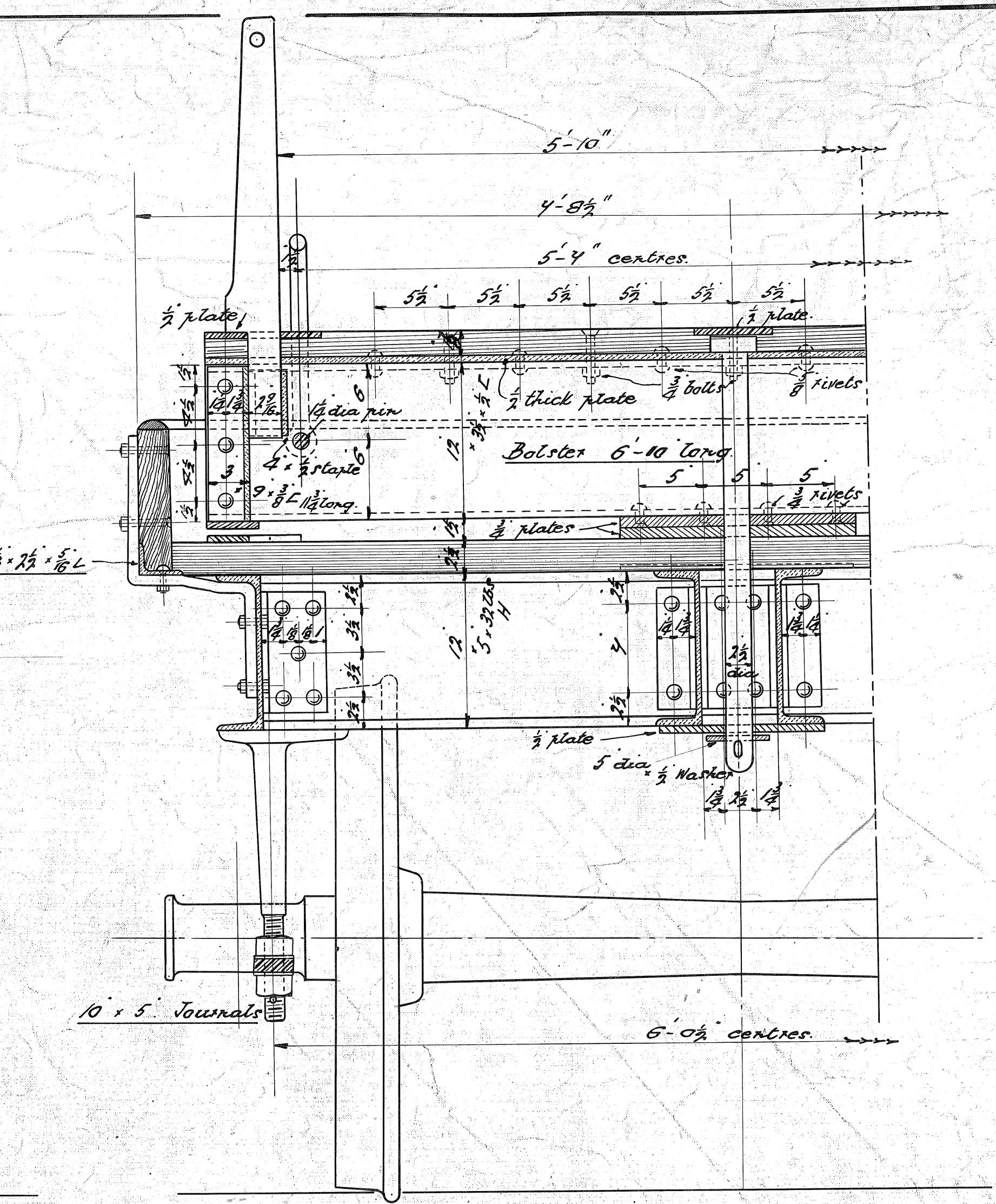
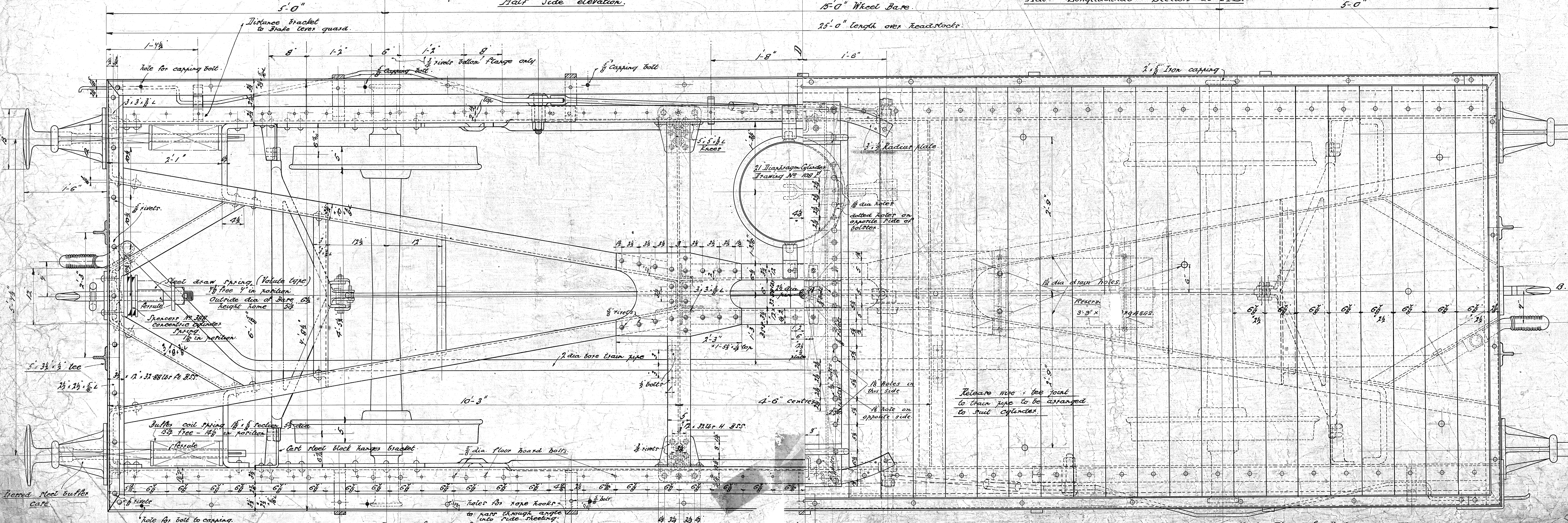


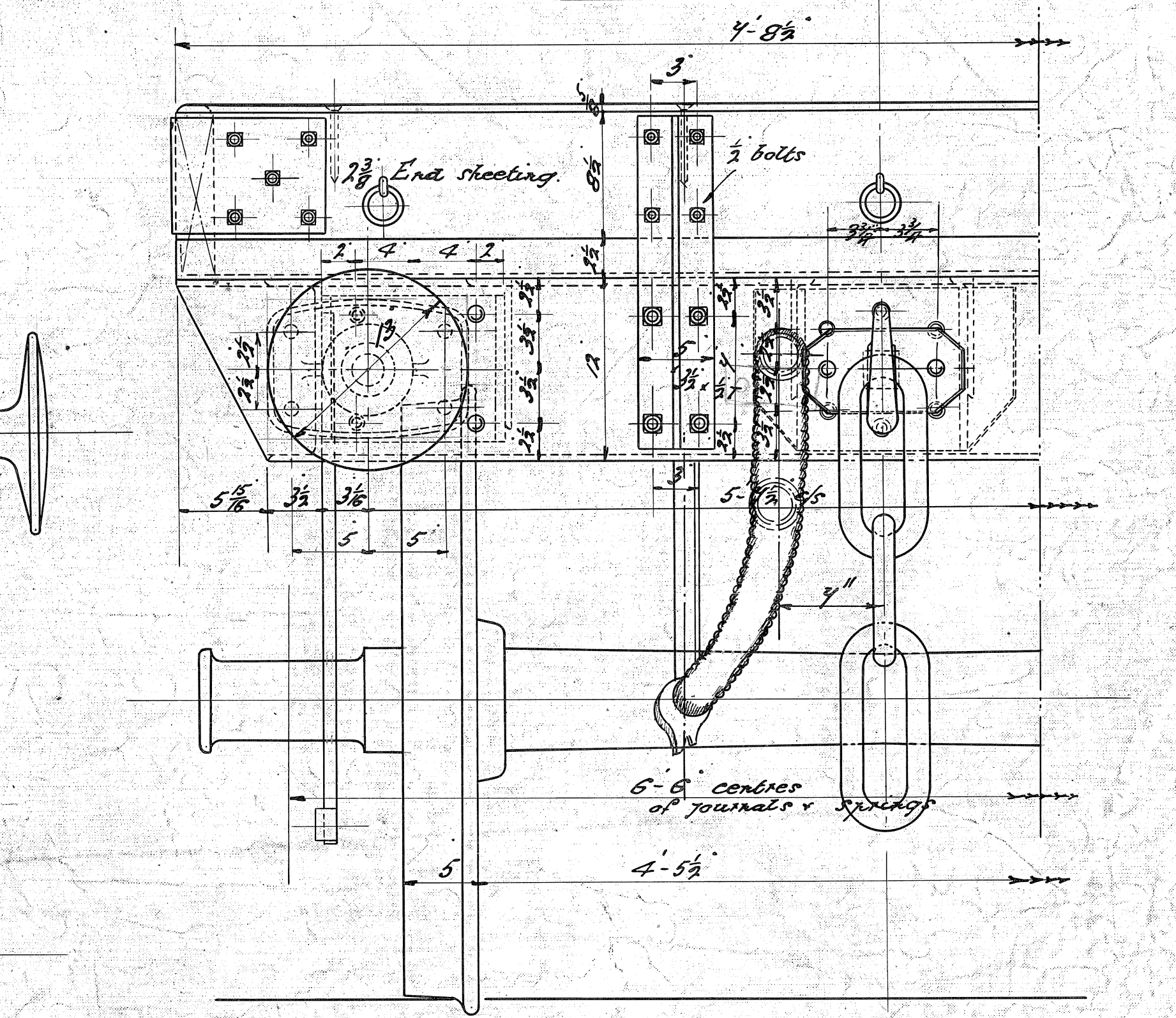
Half Side Elevation. 15'-0" Wheel Bar. 25'-0" Length over Road Wheels. 1/2" Longitudinal Section at A.B. 5'-0"



Half Cross Section at C.D.



Half Plan of Underframe. Half Plan of Body.



Half End Elevation.

Order No	No	Quantity	Remarks
R45	10		
O24	10		
R49	6		
H51	10		

SCALE 1/2 INCHES TO ONE FOOT.

20 TON OIL WAGON. (25'-0" x 7'-8 1/2")

converted to Twin Bolster  
See Dg 11054  
DRAWER NO 9  
DRAWING NO 7559