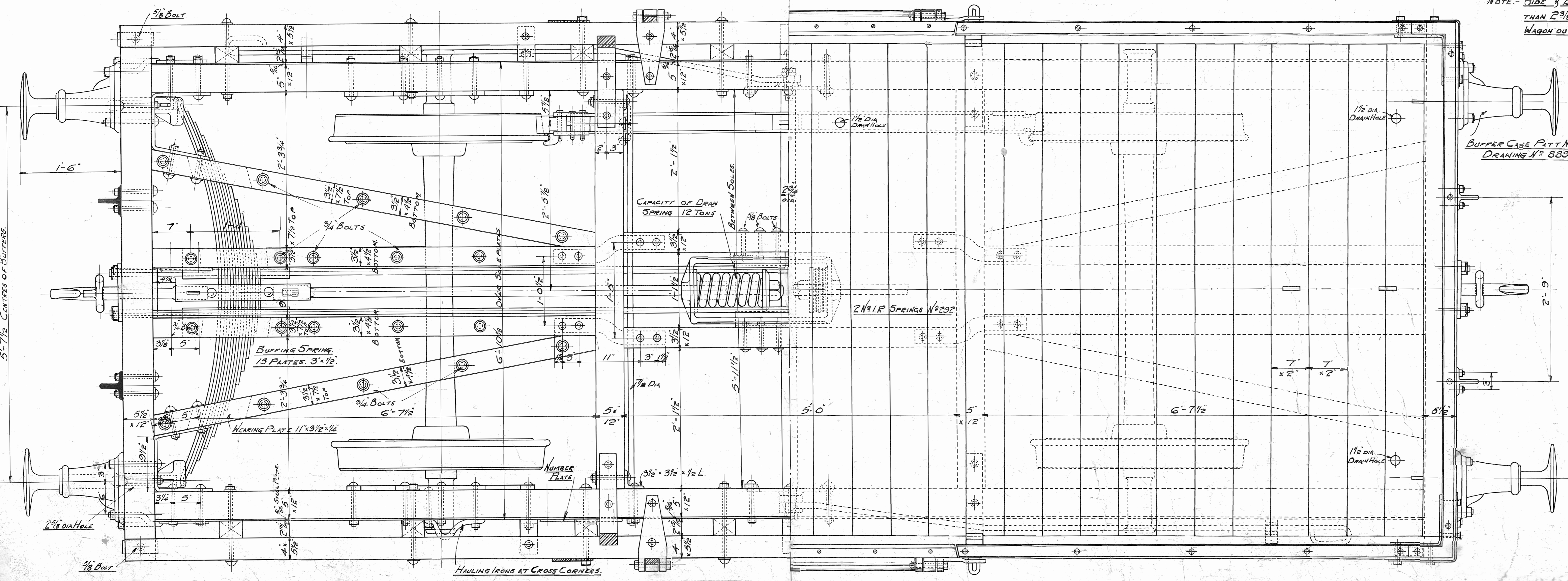


NOTE: SIDE & END SHEETING NOT TO BE LESS THAN 2 3/8" THICK. LENGTH & WIDTH OF WAGON OUTSIDE TO BE ADHERED TO.

SCHEDULE OF DRAWINGS	
DESCRIPTION	No
DETAILS OF BODY IRONWORK	9531
" " " "	9532
" " UNDERFRAME IRONWORK	9535
" " BRAKEWORK	9533
" " " "	9536
" " CASTINGS	8896



# L & Y R

## 20'-0" HIGH SIDED WAGON

### WITH FIXED ENDS

SCALE 1/2 INCH TO ONE FOOT

ORDER No  
DRAWING No 9557

25/16/13/13