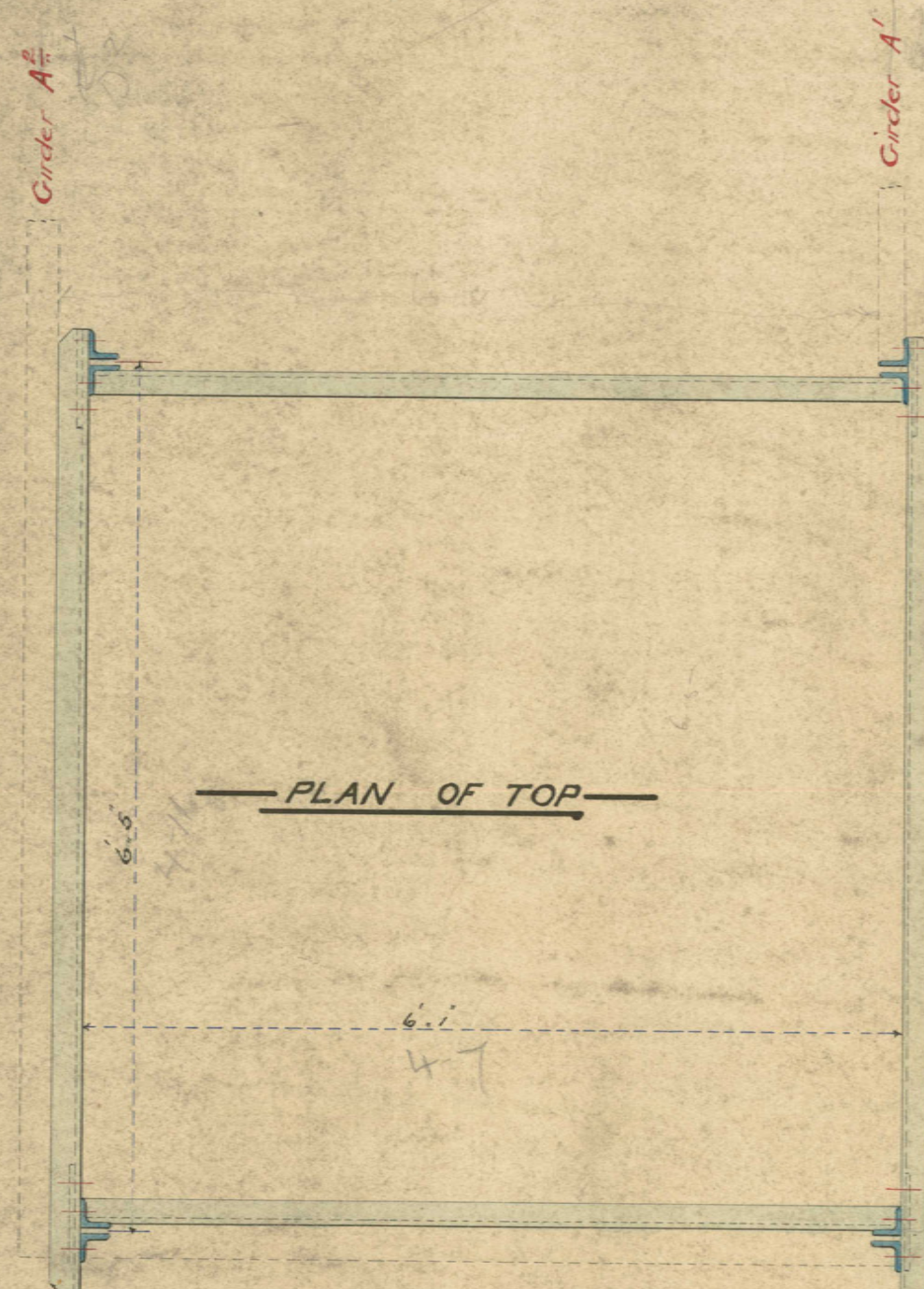


NEW FOOTBRIDGE

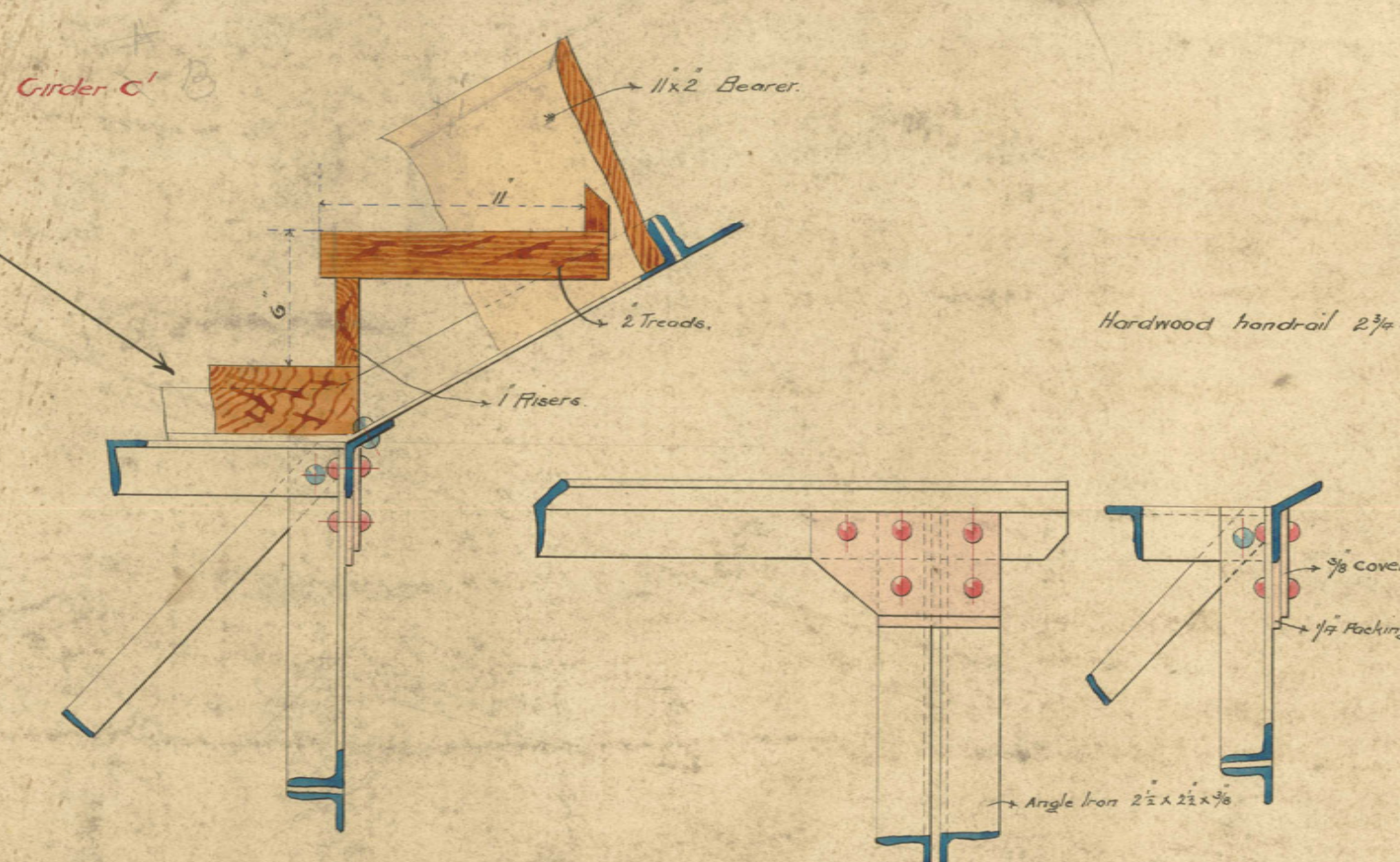
OFFICE COPY



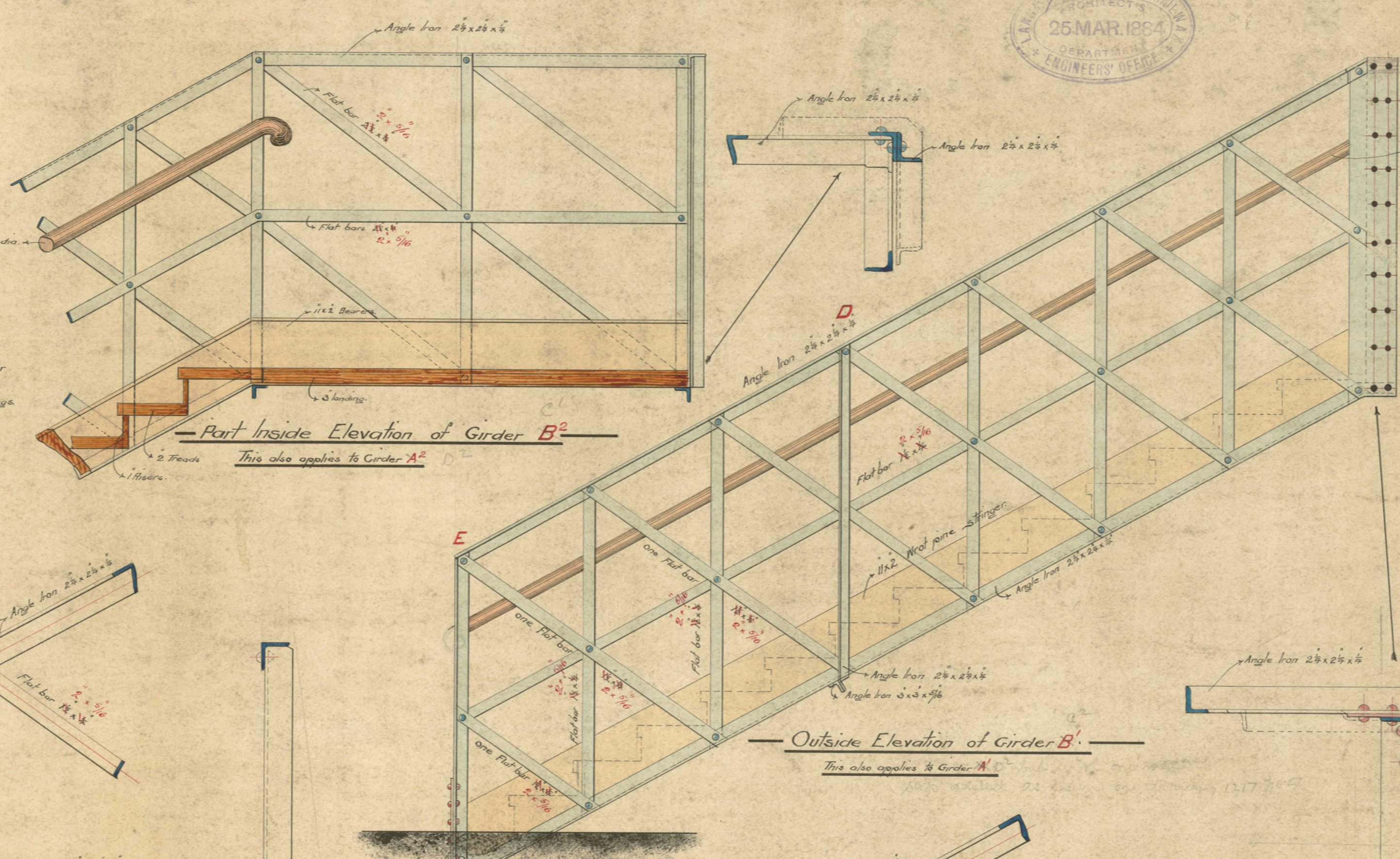
W 3



PLAN OF TOP

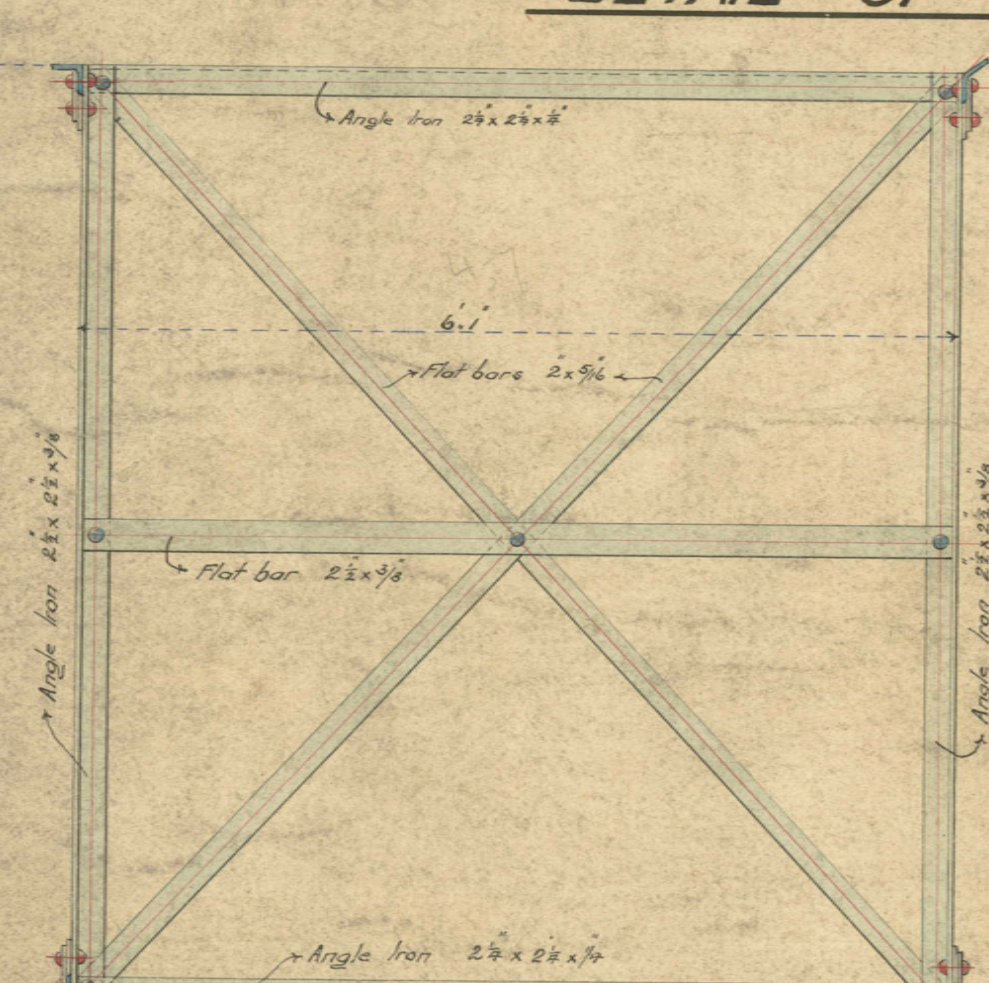


DETAIL OF PIERS

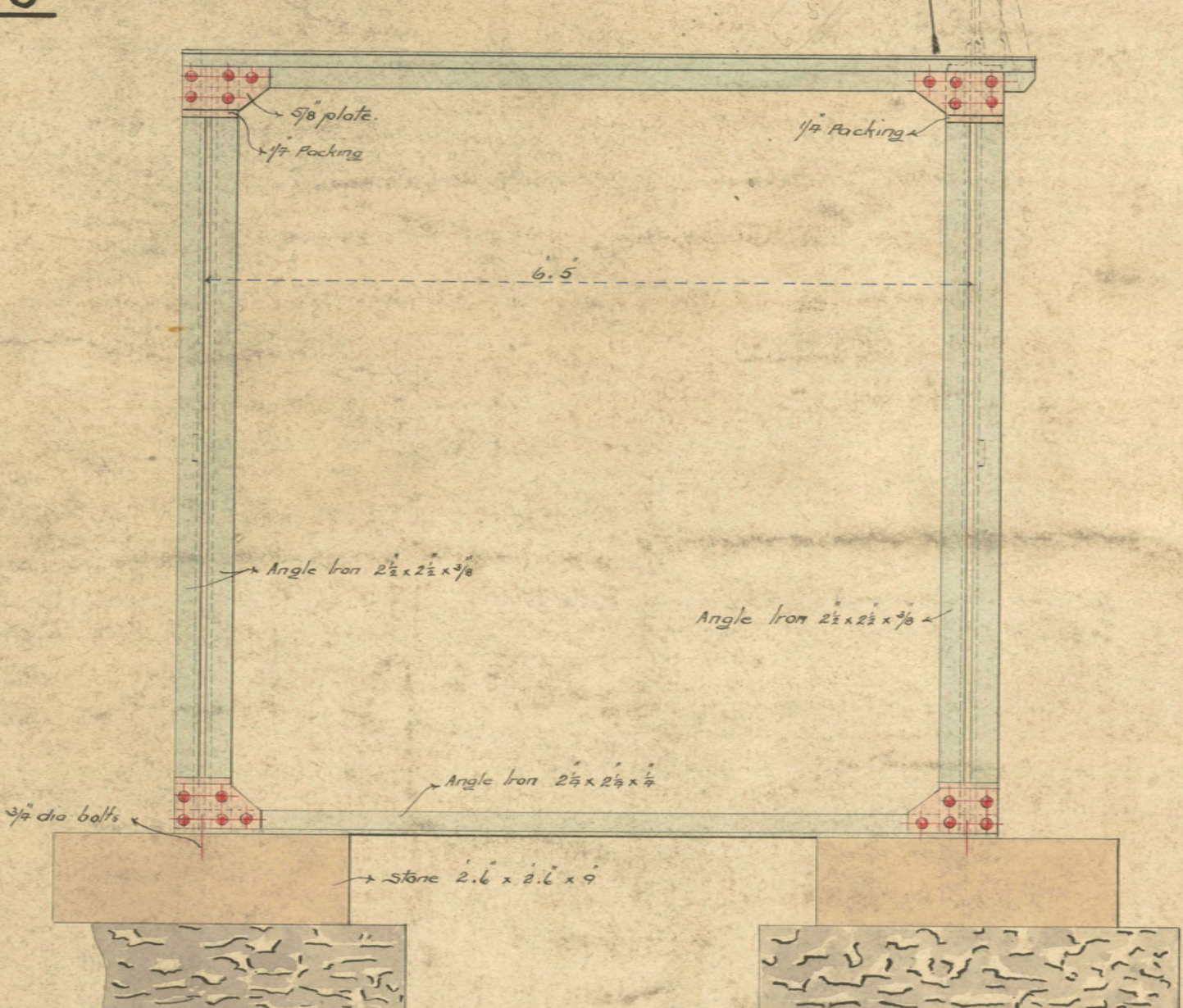


Part Inside Elevation of Girder B

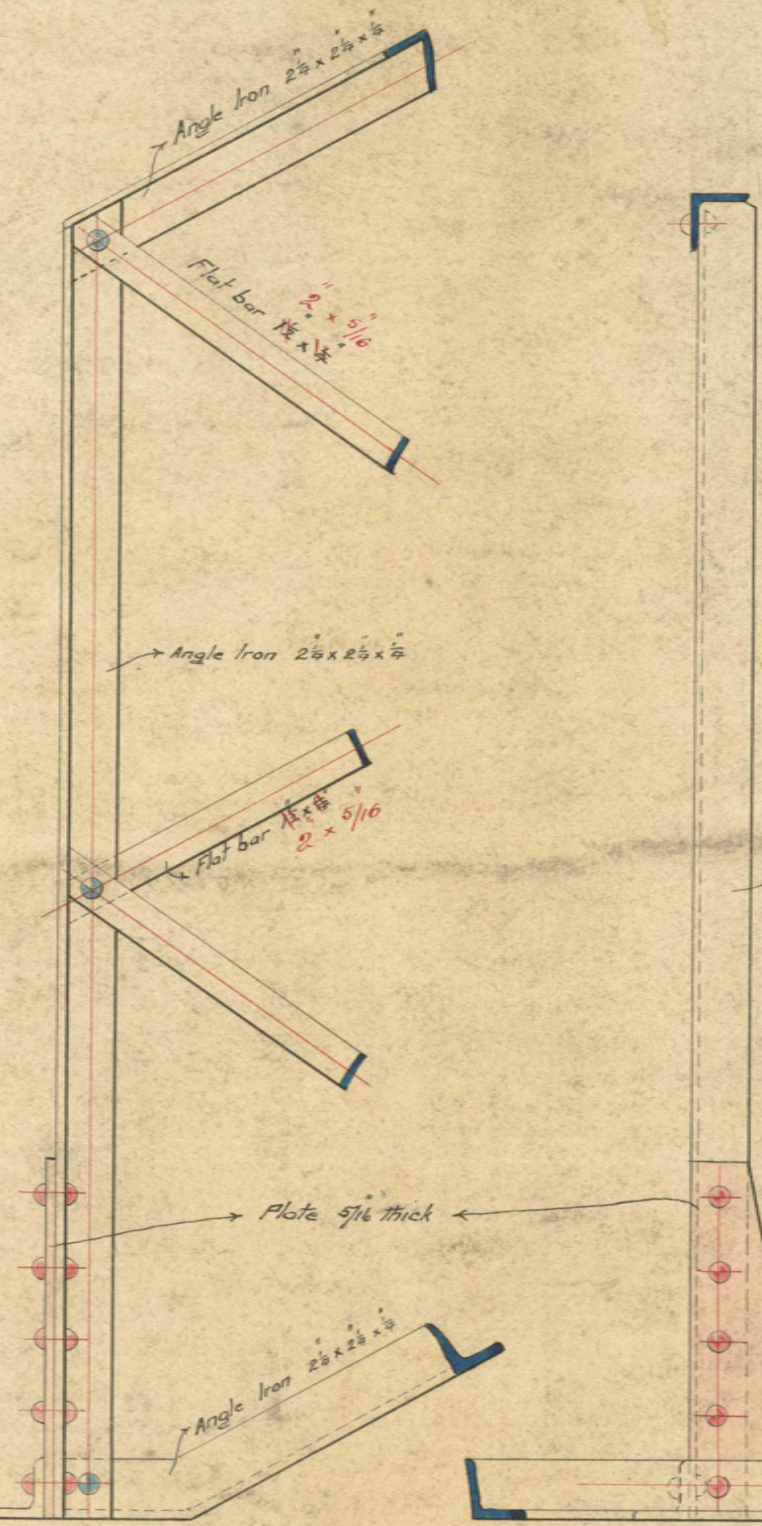
Outside Elevation of Girder B



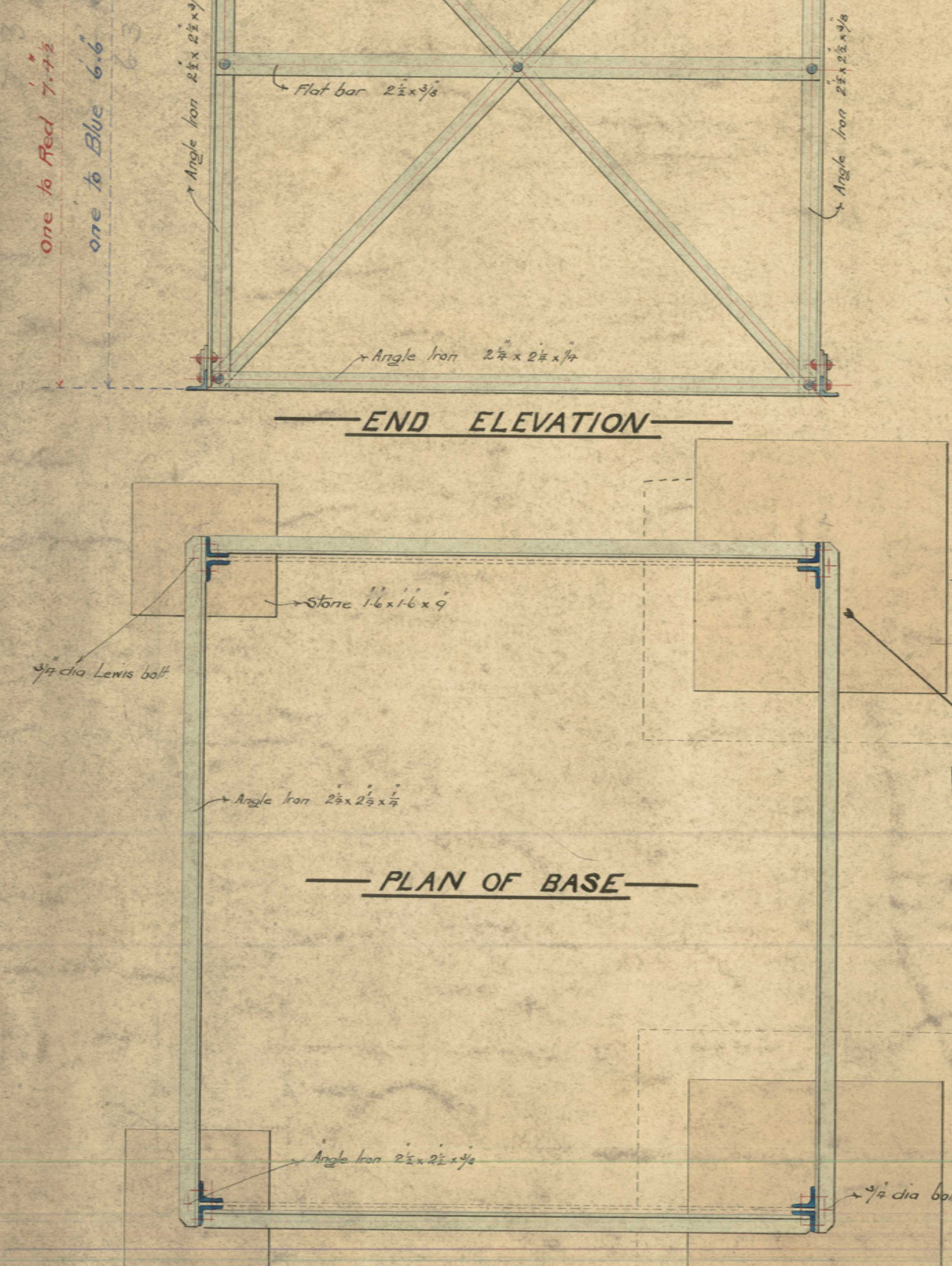
END ELEVATION



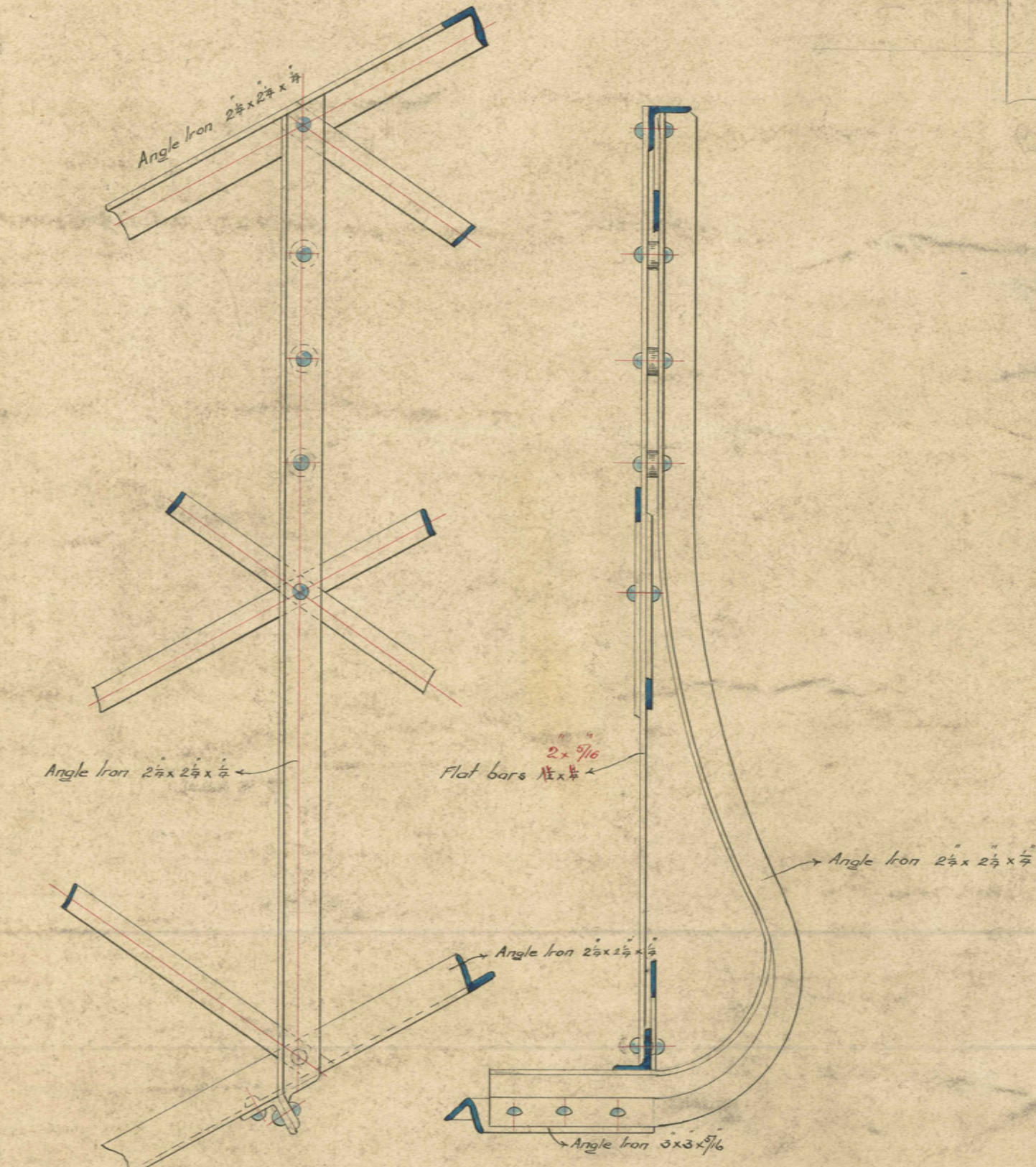
SIDE ELEVATION



DETAIL AT E



PLAN OF BASE



DETAIL AT D

NOTE The inclined girders A, B and B' have one angle iron only at top and bottom, the ends of the top angle iron to face outwards and that of the bottom angle iron to face inwards.

NOTE Rivets securing flooring Angle irons & Girders in Piers 3/8 Dia. in Lattice bars of Girders A, B & B' 1/2 Dia.

Scales 3/4 and 1/2 = 1 Foot

W. H. ...

Wardley & Co. August 26/94