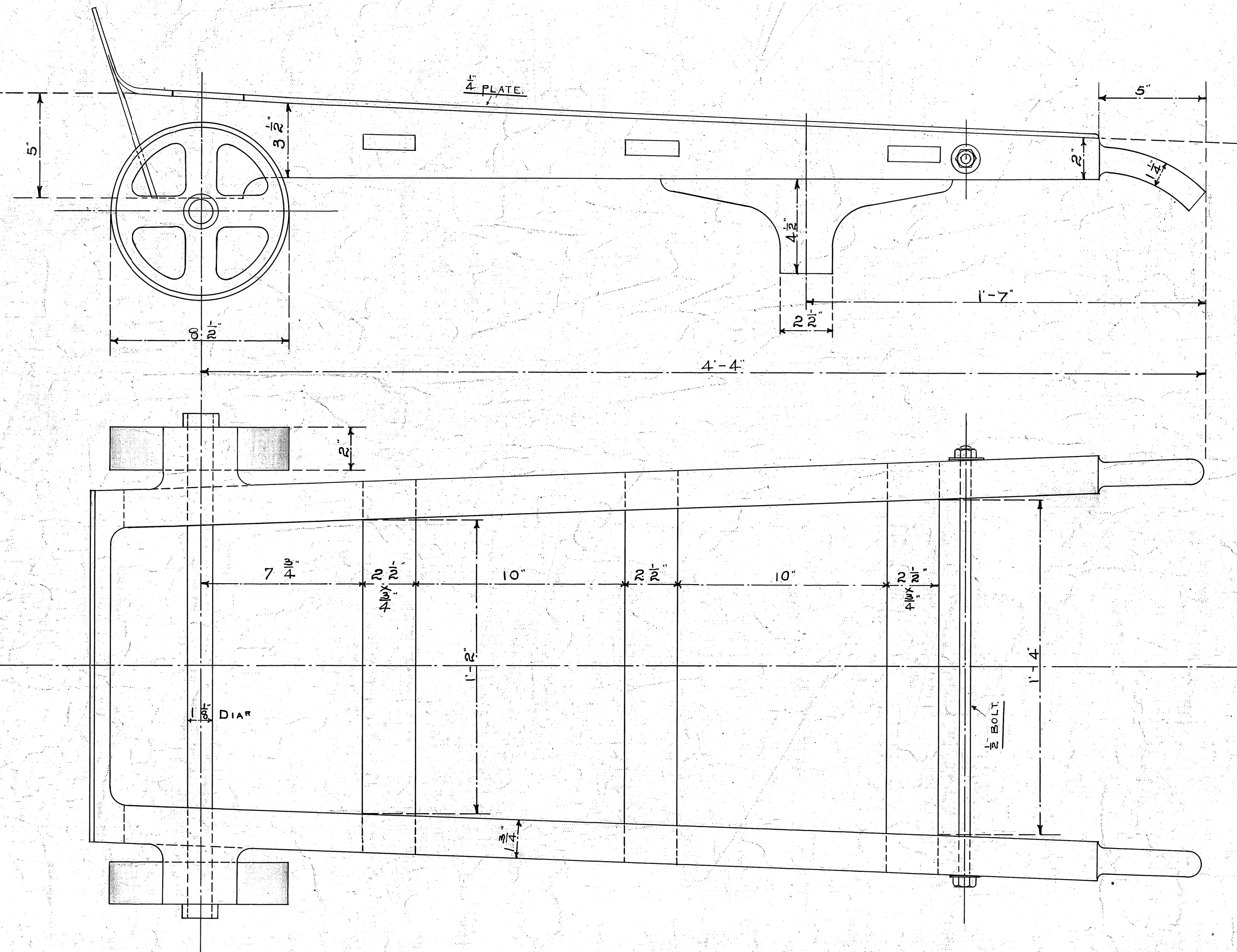


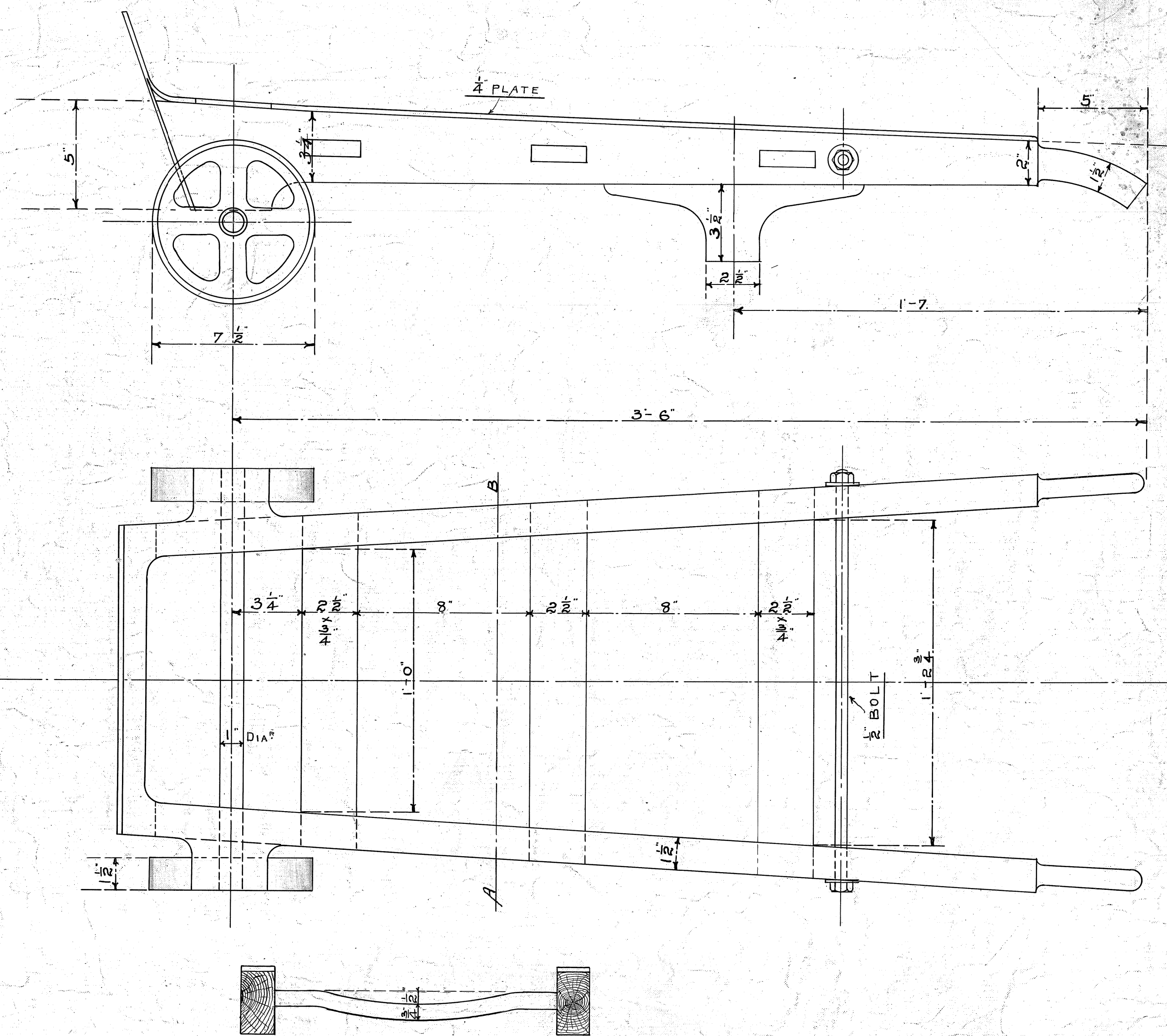
WOOL TRUCK.

WEIGHT 54 LBS.



SACK TRUCK.

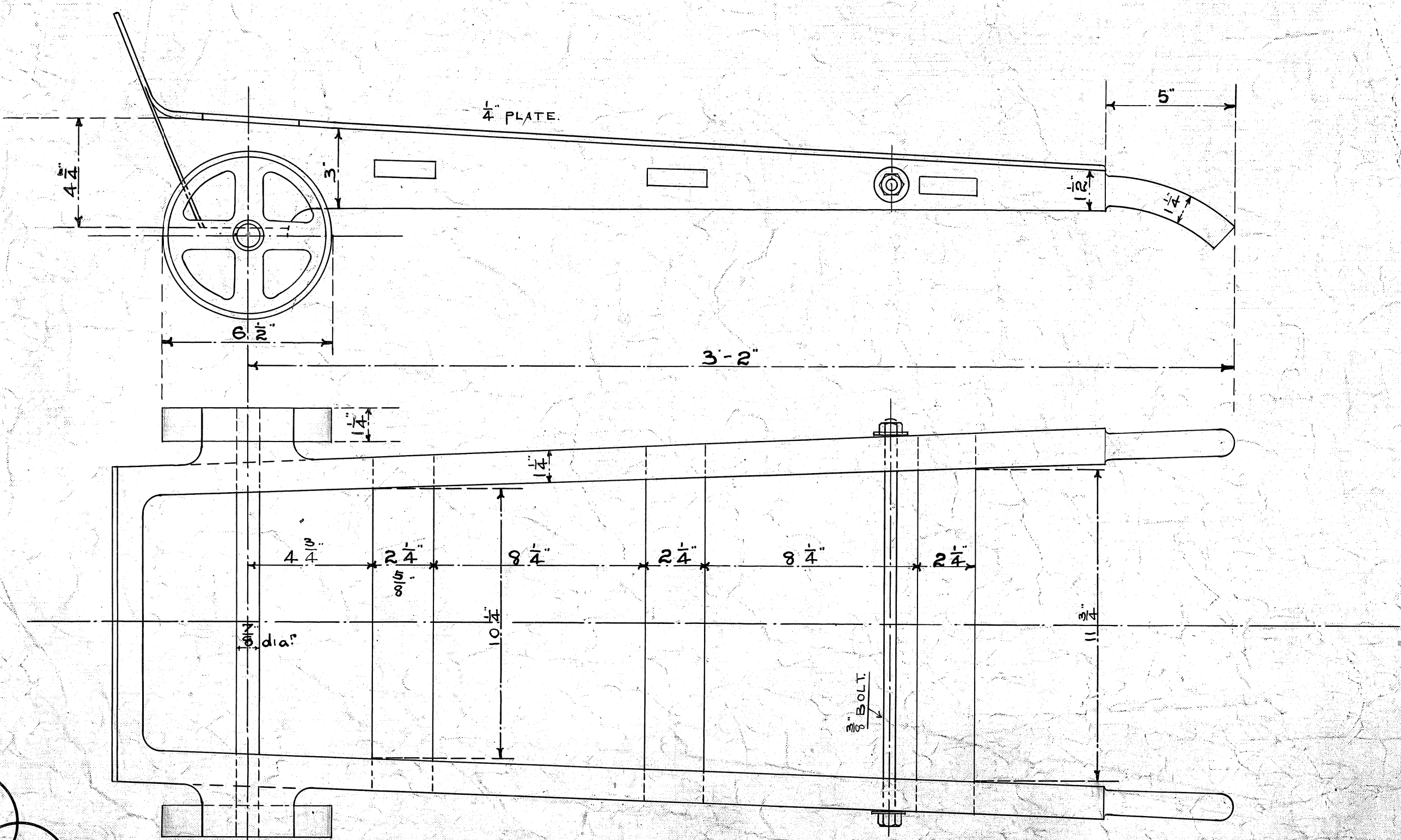
WEIGHT 44 LBS.



SECTION ON A.B.

GRAIN TRUCK

WEIGHT 28 LBS



SCALE 3 INCH TO ONE FOOT.

— STANDARD — TRUCKS —

DRAWING N° 5119

DRAWER 2 S

LANCASHIRE & YORKSHIRE
 CARRIAGE & WAGON
 NEWTON HEATH,
 MANCHESTER.
 DEPARTMENT
 RAILWAY COMPANY

MICROFILMED
OCT 1974